

Welcome to the
Public Information Meeting
for the
14th Street Bridge Corridor
Environmental Impact Statement

October 9th, 2007
Arlington, Virginia

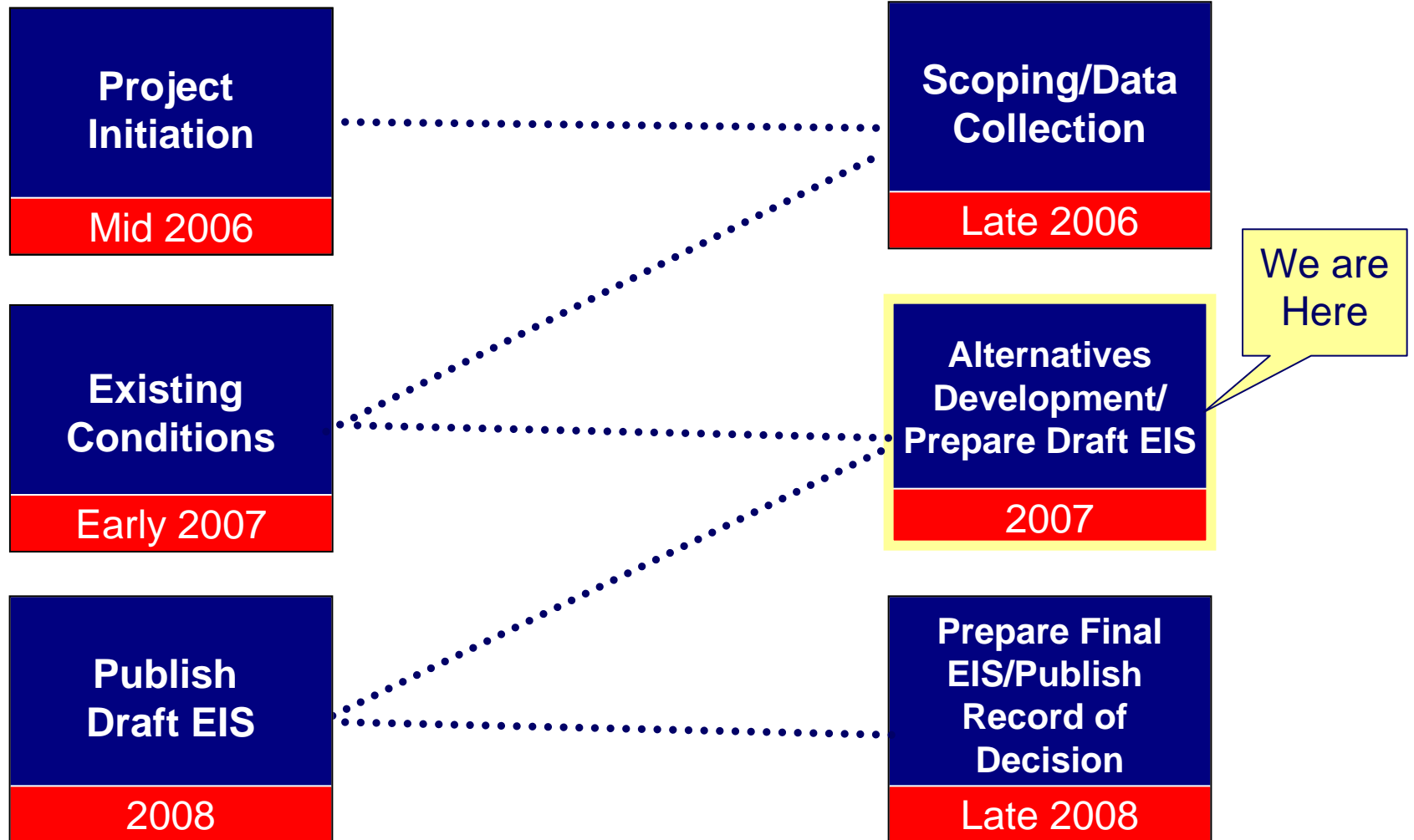
October 10th, 2007
Washington, D.C.

Goals for This Meeting

- Review project status
- Present preliminary concepts
- Get your ideas (Activity)
- Allow open discussion with project team



Preliminary Schedule



To identify actions in the corridor that can:

- reduce congestion
- enhance safety
- improve traffic operations

Ongoing Stakeholder Input

Problems



October 2006

Ideas



February 2007

Alternatives

PUBLIC MEETING ACTIVITY: CREATE AN ALTERNATIVE

It is unlikely that any single improvement option could stand alone and meet the Purpose and Need of the 14th Street Bridge Corridor study which is to reduce congestion, enhance safety and improve traffic operation. Therefore, before the next step in the evaluation begins, the options need to be grouped together to create three or four improvement "alternatives" that we can study further and compare to the "no-build alternative."

This evening we invite you to design your own alternative by selecting at least one option or "No Action" from the categories below. The study team will use the alternatives suggested by the public in developing the three to four alternatives evaluated in the next phase of the study. While we can not assure that your specific alternative is chosen for further study, the options selected most often by the public will appear in one or more of the alternatives we do evaluate.

Theme or Name of your Alternative (examples: Transit focused, Safe+emphatic, Improved travel speeds, Low cost, etc.):

Transit Options:

<input type="checkbox"/> Convert shoulders to bus-only lanes on Rockledge Bridge	<input type="checkbox"/> Expand shuttle system for DOD
<input type="checkbox"/> Implement express bus service to BRT lanes	<input type="checkbox"/> Implement double-decker bus service
<input type="checkbox"/> Designate a system of bus-only lanes	<input type="checkbox"/> Retain CTS freight lot to allow expanded VRE service
<input type="checkbox"/> Extend bus lanes with direct access to transit center	<input type="checkbox"/> Expand number of Metro cars
<input type="checkbox"/> Enhance/relocate transit center	<input type="checkbox"/> Provide water taxi service from Arlington to DC Waterfront to Georgetown
<input type="checkbox"/> Create connector and tour bus parking/loading facilities at Crystal City in Bethesda Overlook	<input type="checkbox"/> Expand federal transit limited fare subsidy program
<input type="checkbox"/> Increase event shuttle service	<input type="checkbox"/> Other

Bicycle/Pedestrian Options:

<input type="checkbox"/> Construct separated bike/pedestrian crossing (three options)	<input type="checkbox"/> Improve pedestrian signing
<input type="checkbox"/> Add bike lanes to current system in areas where there are gaps	<input type="checkbox"/> Create integrated (DC-V/A-National Park Service) bike system, including signing for commuters and other destination bikers
<input type="checkbox"/> Improve pedestrian connections in the corridor	<input type="checkbox"/> Other

CREATE AS MANY ALTERNATIVES AS YOU WISH, JUST DON'T REPEAT THE EXACT COMBINATION OF OPTIONS

TONIGHT!

Initial Screening Summary

- 94 suggested improvements
- 31 combined as duplicates/similar ideas
- 20 no longer considered in this EIS
- 43 options currently under consideration

Transit

Bicycle and Pedestrian

Highway

Management

Transit

Transit CONCEPTS

- ▶ Convert shoulders to bus-only lanes on Rochambeau Bridge
- ▶ Implement express bus service in extended HOT lanes
- ▶ Designate a system of bus-only lanes
- ▶ Extend bus lanes with direct access to transit centers
- ▶ Enhance/retrofit transit centers
- ▶ Create commuter and tour bus parking/loading facilities in Crystal City and at Banneker Overlook
- ▶ Increase event shuttle service
- ▶ Expand shuttle system for DoD
- ▶ Implement double decker bus service
- ▶ Relocate CSX freight line to allow expanded VRE service
- ▶ Expand number of Metro cars
- ▶ Provide water taxi service from Arlington to DC Waterfront to Georgetown
- ▶ Expand federal mass transit user subsidy program

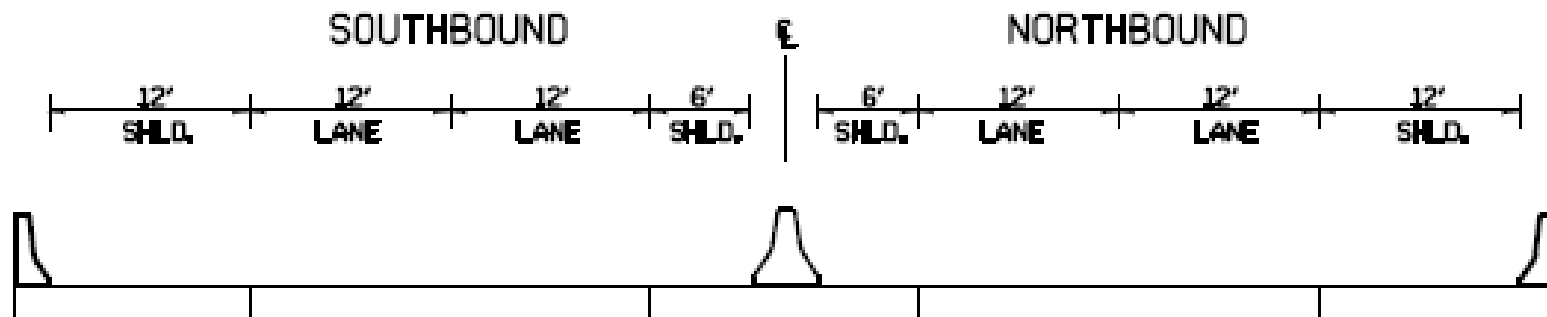


Bus-only Lanes on Bridge

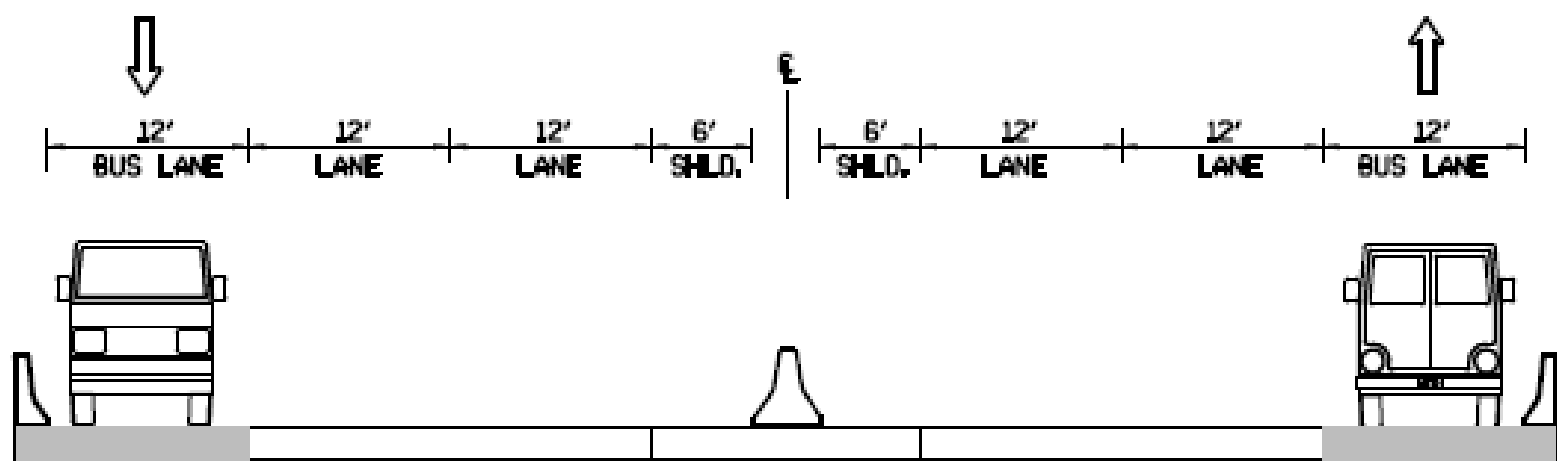
- Bus-only lanes provide congestion free flow for buses across bridge
- Increases person-capacity on bridge
- Convert shoulders on Rochambeau Bridge



Bus-only Lanes on Bridge

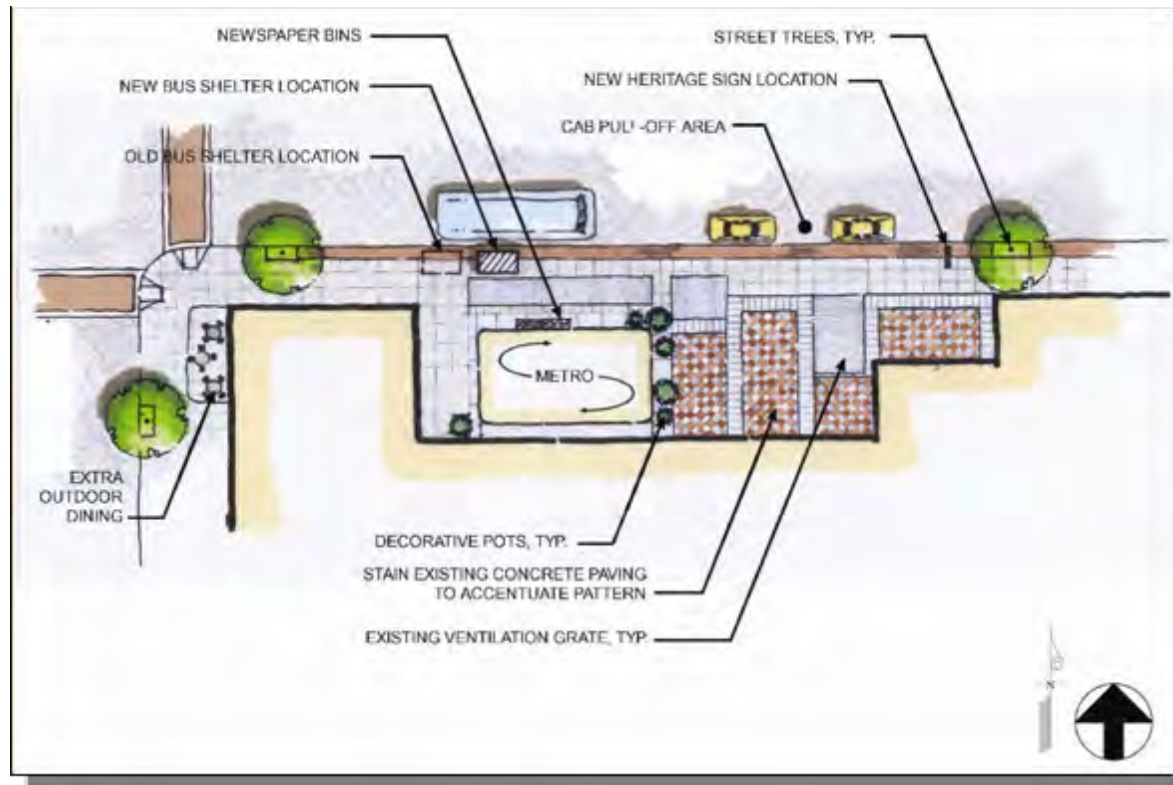


Rochambeau Bridge



Transit Centers





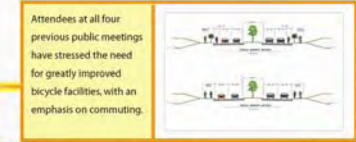
Bicycle/ Pedestrian

Bike/Pedestrian CONCEPTS

▶ Construct separated bike/pedestrian crossing (three options)



▶ Add bike lanes to current system in areas where there are gaps



Attendees at all four previous public meetings have stressed the need for greatly improved bicycle facilities, with an emphasis on commuting.

▶ Improve pedestrian connections in the corridor



Improve the attractiveness, safety and connectivity of sidewalks and trails linking popular transit, lodging and retail destinations.

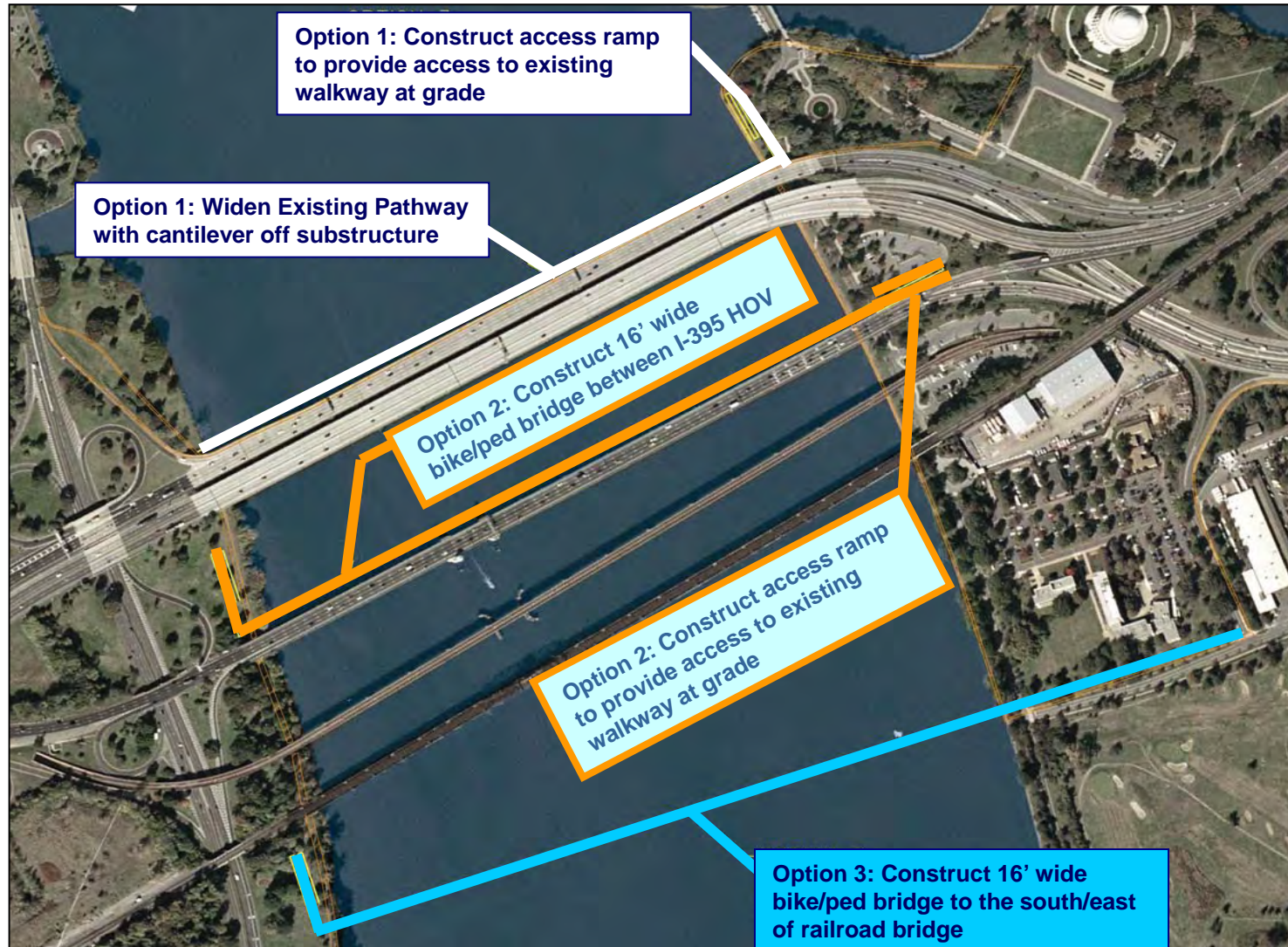
▶ Improve pedestrian signing

Provide clear, distinctive, and informative signs at key intersections. Mark exits and entrance ways to guide tourists and other pedestrians to popular destinations.

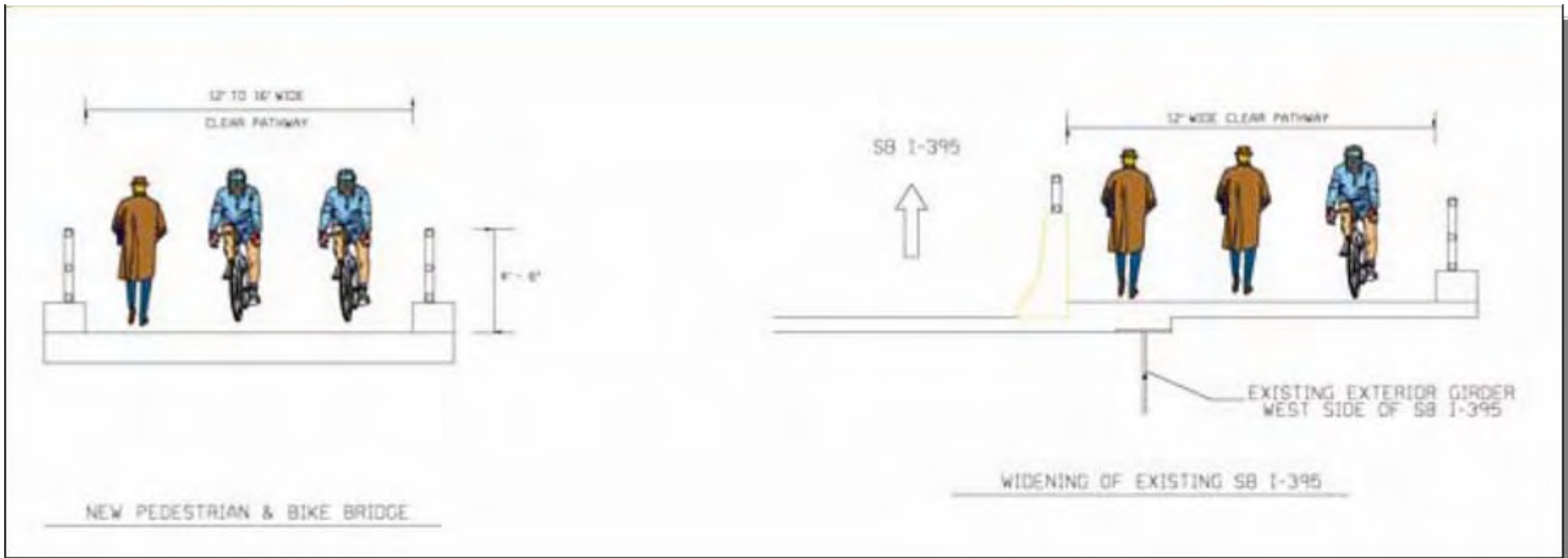
▶ Create integrated (DC-VA-National Park Service) bike system, including signing for commuters and other destination bikers



Bike/Pedestrian Crossing



Bike/Pedestrian Crossing



Improve Pedestrian Connections



Improve the attractiveness, safety and continuity of sidewalks and trails linking popular tourist, lodging and retail destinations.



Highway

Highway CONCEPTS

- ▶ Construct geometric improvements at I-395 and 9th Street (two options)
- ▶ Construct geometric improvements at I-395 and George Washington Memorial Parkway
- ▶ Reduce interstate access points at Boundary Channel Drive
- ▶ Grade separate 14th Street between the bridge and Constitution Avenue
- ▶ Construct shoulders on bridges
- ▶ Convert shoulders on Rochambeau Bridge to general purpose lanes
- ▶ Direct US 1 traffic across Rochambeau Bridge
- ▶ Extend HOV/HOT lanes with congestion pricing across Rochambeau Bridge (no new lanes)
- ▶ Create reversible HOV/HOT lanes across Rochambeau Bridge (no new lanes)

This option improves accessibility to and from US Route 1 by reversing the designation of US Route 1 and I-395 along the 14th Street Bridge crossing. This would be accomplished by improved signing and ramp approaches prior to crossing the 14th Street Bridge.

On the Rochambeau Bridge, convert two HOV lanes to one HOV lane during the AM and PM peak periods. Consequently, instead of the bridge operating at two lanes in each direction, the bridge would consist of 3 to 4 lanes in each direction during the peak directional periods.

9th St. Geometric Improvements

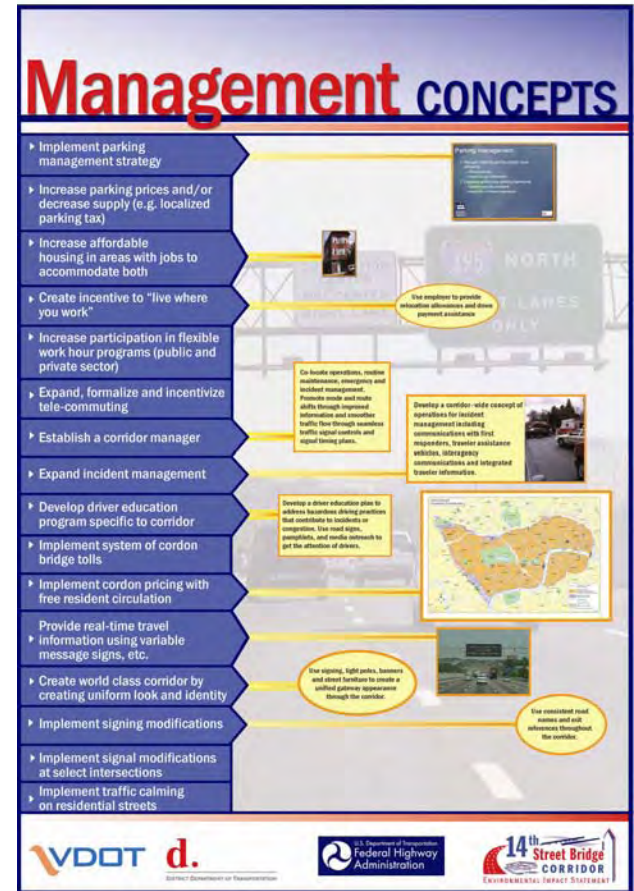
- Relocate northbound on-ramp at 9th Street to right side
- Eliminate lane drop at Maine Avenue on-ramp
- Provide acceleration lane for 7th Street on-ramp



- Removes lane drop from 4 to 3 lanes on I-395 approaching GWMP
- Removes tight north bound on-ramp at I-395. Larger radius on-ramp at Rochambeau Bridge
- Removes tight off-ramp at GWMP
- Improves deceleration lane for off-ramp from SB I-395 to NB GWMP

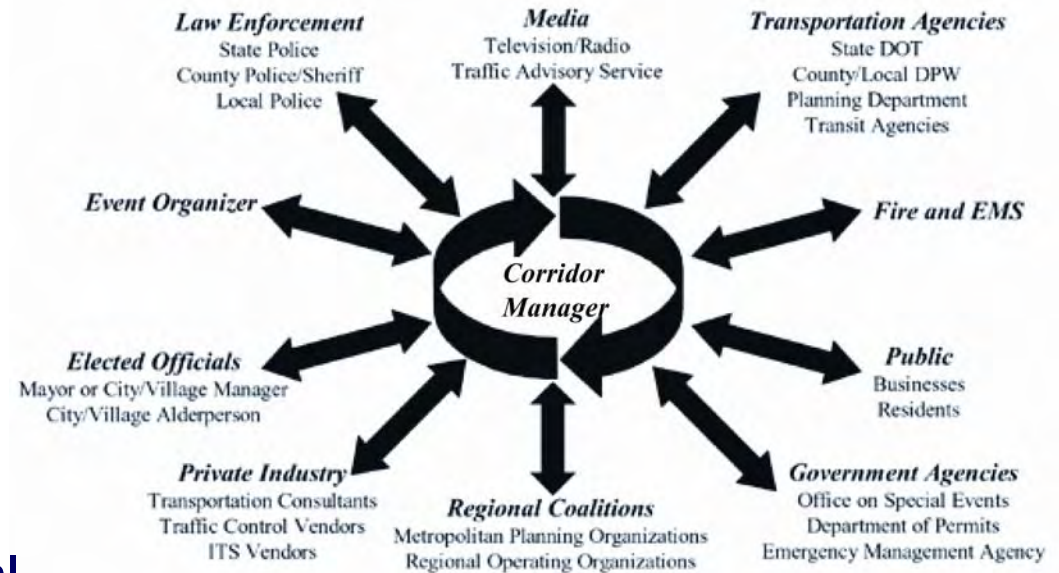


Management



Create Corridor Manager

- Single interagency entity responsible for traffic operations and congestion management
- Operates vehicle recovery program, variable message signs, incident management teams.
- Provides emergency repairs and schedules routine maintenance
- Provides single contact for special events and emergency response

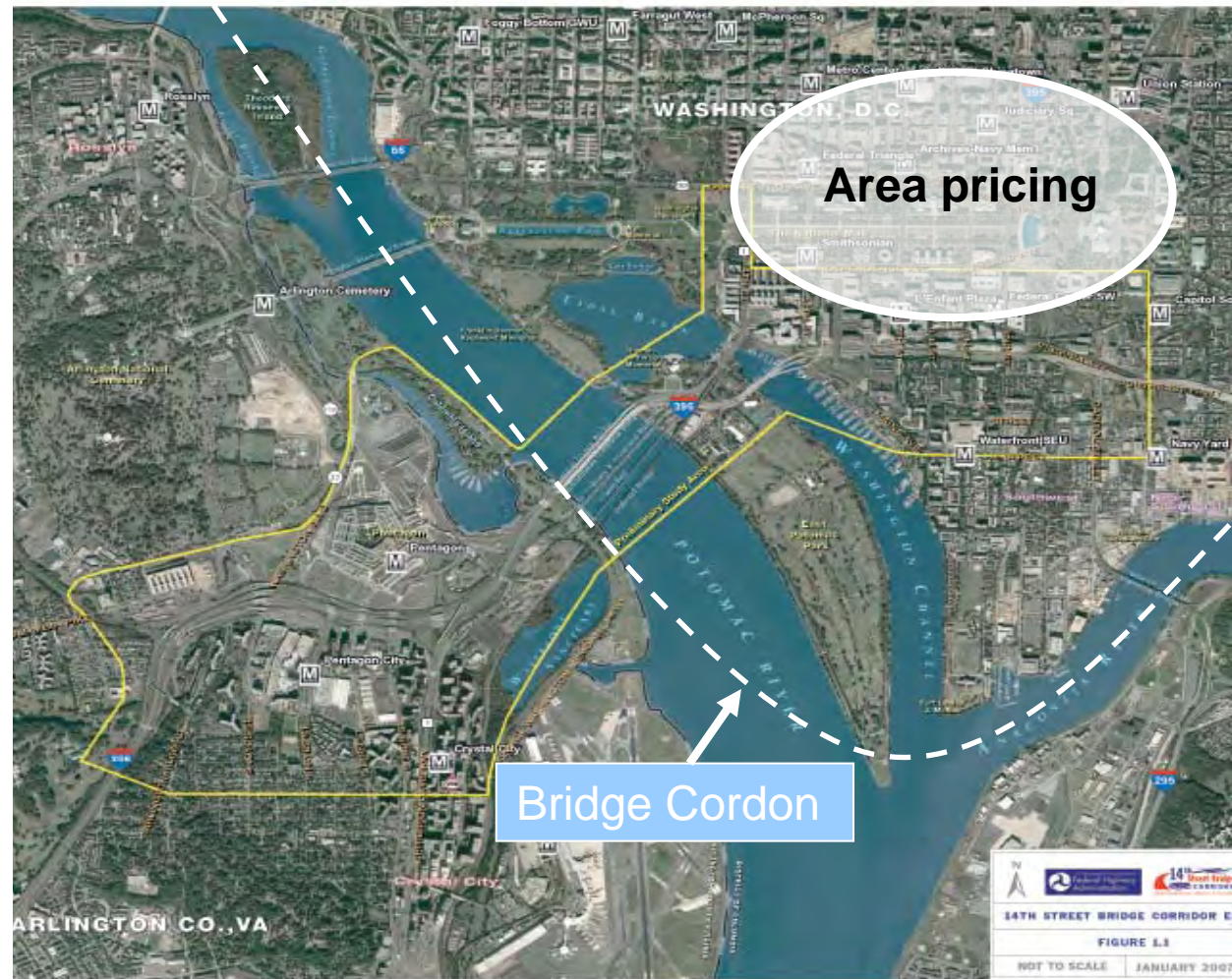


Area Pricing

- Vehicles traveling in this area during daytime pay a fee

Cordon Pricing

- Vehicles traveling across bridges to enter or leave during peak hours pay a toll



“Develop an Alternative”

- Reduce congestion
- Enhance safety
- Improve traffic operations



The image displays four concept posters arranged in a 2x2 grid, each detailing different transportation alternatives for the 14th Street Bridge Corridor. Each poster includes a list of key concepts, illustrative images, and maps.

- Transit CONCEPTS:**
 - Convert shoulders to bus and transit lanes on Buchanan Bridge
 - Implement express bus service on potential HOV lanes
 - Designate a system of bus-only lanes
 - Establish bus lanes with transit services to transit centers
 - Enhance transit transit service
 - Create commuter and car-pool parking, leading to transit in Crystal City area or Scharnback Overlook
 - Increase transit service
- Bike/Pedestrian CONCEPTS:**
 - Convert separated sidewalks/pedestrian crossing street options
 - Add bike lanes to current system to areas where there are gaps
 - Improve pedestrian connections to the corridor
- Highway CONCEPTS:**
 - Convert shoulders to 1-200 and the Street flow system
 - Convert shoulders to 1-200 and George Washington Memorial Parkway
 - Reduce shoulder access points at Boundary Channel Drive
 - Grade separated 1400 Street between the bridge and Constitution Avenue
 - Convert shoulders to bridge
 - Convert shoulders on Buchanan Bridge to general purpose lanes
 - Street LR 3 traffic lanes Buchanan Bridge
 - Establish HOV/NOV lanes with progressive pricing across Buchanan Bridge and new lanes
 - Create reversible HOV/NOV lanes across Buchanan Bridge (see new lanes)
- Management CONCEPTS:**
 - Implement parking management strategy
 - Increase parking areas and/or increase capacity (e.g. increased parking lots)
 - Increase efficiency (e.g. reduce parking in areas with poor accessibility)
 - Create incentives for "the other way"
 - Increase participation in broader work force programs (public and private sectors)
 - Expand, flexible and increased teleworking
 - Establish a carpool manager
 - Expand incident management
 - Develop driver education program specific to corridor
 - Implement system of camera bridge tolls
 - Implement carpool parking with free incident mitigation
 - Provide real-time travel information (e.g. variable message signs, etc.)
 - Create work force center by installing work force and safety
 - Implement signage modifications
 - Implement signal modifications at several intersections
 - Implement traffic calming in commercial areas

Each poster features the VDOT logo and the 14th Street Bridge Corridor logo at the bottom.

Questions

